

Acre Lane, Brixton, SW2

3 bedroom flat to let

£600 Per Week

Furnished

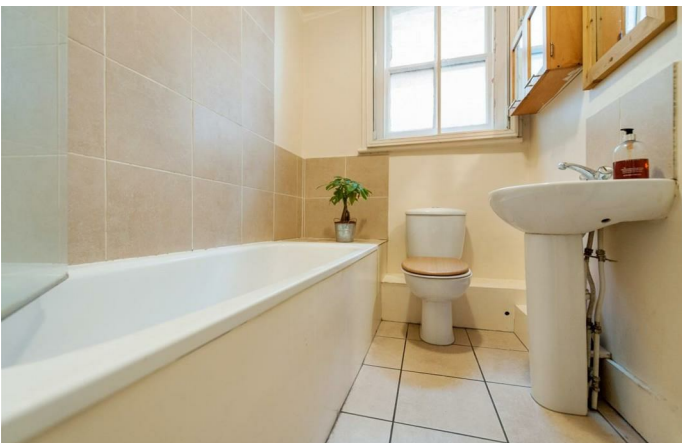
Property Details

A three double bedroom Victorian conversion flat sandwiched between Clapham and Brixton. The property is perfectly proportioned and has a separate kitchen, that comes with plenty of storage space, three good sized double bedrooms, a family sized bathroom and a reception with space for a dining area. Being equidistant from both Brixton and Clapham means that you are spoiled for choice when it comes to restaurants and bars. There are also great transport links straight into the city with both the Northern line and the Victoria line close by.

Features

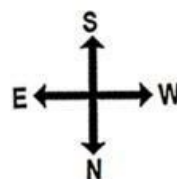
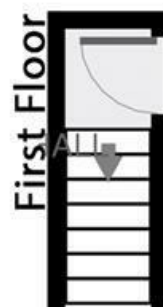
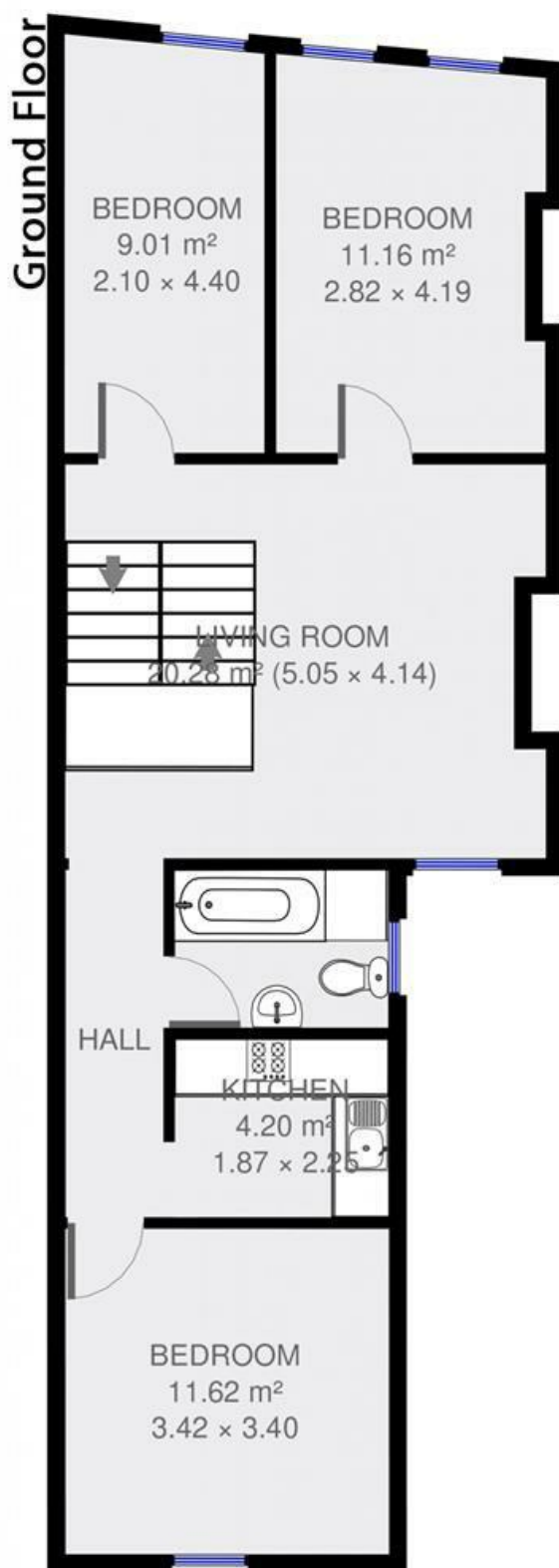
- Three double bedrooms
- Family bathroom
- Separate reception and kitchen area
- Light and airy throughout
- Sought after location
- Walking distance to the northern and victoria tube lines

Council tax band C EPC rating D (58)



Acre Lane, Brixton, SW2

acre lane



3 bed Flat.
Approx internal area:

711 sqft 66 sqm

While we do try our very best, floor plans are produced as a guide only and we take no responsibility for the precise accuracy with which any property is represented

Acre Lane, Brixton, SW2

